



Professor A Hashim
The University of Ulster

1. The Interactive Systems Centre (ISC) is located within the University of Ulster at Magee College, Londonderry. It is committed to the enhancement of Northern Ireland's multimedia interactive systems. It has close links with Digital Equipment Corporation (DEC) which supports the Centre.

2. The Centre provides infrastructure, technology transfer, advice and development expertise. Its multi-disciplinary team includes computer scientists, engineers, psychologists, educators, product designers and business managers. These are divided between four disciplines:

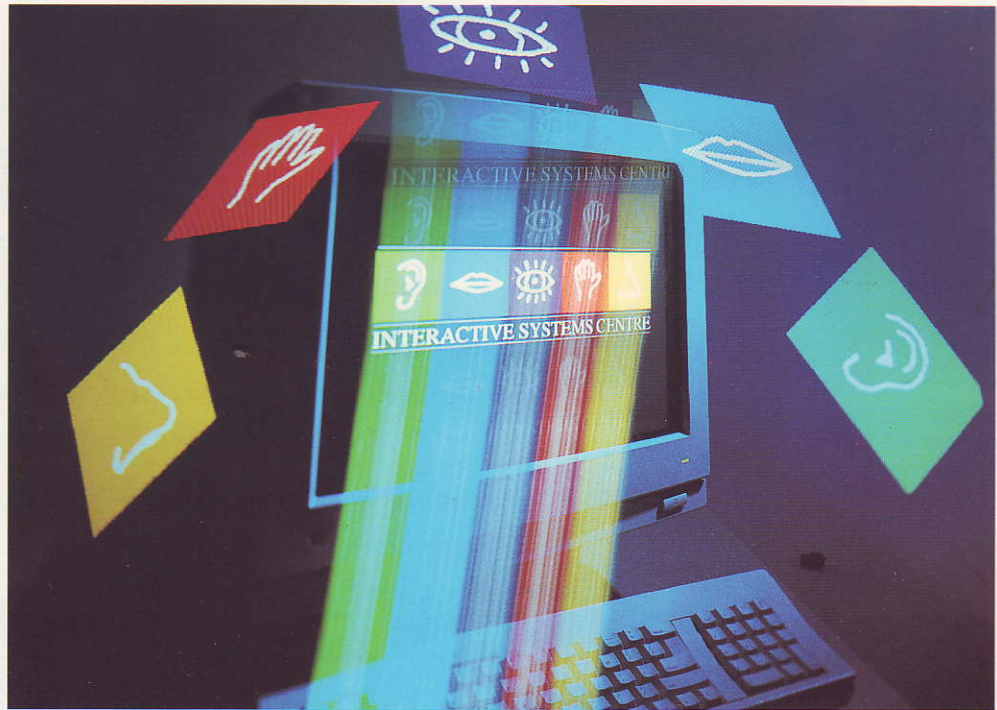
COMPUTING:

- the computing team investigates, inter alia, techniques for the separation of the user interface from the functional components of the computer system.

This enables rapid prototyping of interfaces with a high level of end-user involvement in their design.

Interactive Systems Centre





MULTIMEDIA:

- the multimedia team integrates an increasing range of peripherals and tools which include video, CD-ROM, speech and gesture.

PSYCHOLOGY:

- the psychology team studies socio-organisational and contextuality issues. It is concerned with all aspects of design and evaluation of all systems used by the Centre.

DESIGN:

- the design team studies industrial design concepts, methodologies, tools and information presentation skills to improve product success.

3. The Centre has a number of exemplar projects which utilise skills from all four teams. Application areas include: manufacturing information systems, decision support systems, tourist information systems and computer-aided learning.

For further information please contact:

Professor A Hashim

Tel: +44-504-265621 (Ext 5408)

Interactive Systems Centre

Fax: +44-504-370040

The University of Ulster

Magee College

Northland Road

Londonderry BT48 7JL

Northern Ireland, U.K.



INDUSTRIAL RESEARCH & TECHNOLOGY UNIT

Netherleigh
Massey Avenue
Belfast BT4 2JP
Northern Ireland, UK
Tel: +44-232-529207
Fax: +44-232-529548